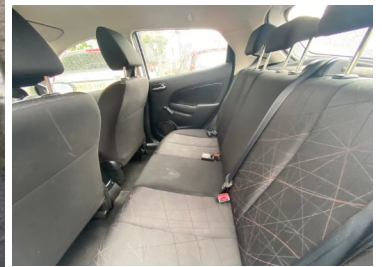


# North End Motors

*The garage with the good reputation*

2011(11) Mazda 2 1.3 Tamura 5dr

£3,495



**Engine:** Petrol  
**Body:** Hatchback  
**Gearbox:** Manual  
**Capacity:** 1349cc  
**Colour:** White  
**Mileage:** 97,917  
**CO<sup>2</sup>:** 119g/km  
**MPG:** 55.4mpg  
**Top Speed:** 106mph  
**BHP:** 83bhp  
**Insurance Grp:** 11E

**North End Motors**  
 203 London Road  
 Portsmouth  
 Hampshire, PO2 9AH

ONE OWNER	16" ALLOYS
POWER STEERING	REMOTE FUEL CAP RELEASE
SPEED WARNING	TRIP COMPUTER
4 SPEAKERS	AUXILIARY INPUT SOCKET
SINGLE PLAY CD/RADIO WITH MP3 COMPATABILITY	STEERING WHEEL MOUNTED AUDIO CONTROLS
BODY COLOUR BUMPERS	BODY COLOUR DOOR HANDLES
BODY COLOUR DOOR MIRRORS	BODY COLOUR SPORTS GRILLE
ELECTRIC ADJUSTABLE/HEATED/FOLDING DOOR MIRRORS	ELECTRIC FRONT WINDOWS + DRIVERS ONE TOUCH
HEATED REAR WINDOW	HEADLAMP LEVELLING
SPORTS HEADLAMPS	INTERMITTENT FRONT AND REAR WASH/WIPE
AIR VENTS ON DASHBOARD	60/40 SPLIT REAR SEATS
CLOTH UPHOLSTERY	CENTRE CONSOLE WITH CUPHOLDERS
FRONT DOOR POCKETS WITH BOTTLE HOLDERS	DRIVERS FOOTREST
GLOVEBOX	FRONT PASSENGER GRAB HANDLE
HEIGHT ADJUSTABLE HEAD RESTRAINTS	HEIGHT ADJUSTABLE DRIVER'S SEAT
INTERIOR COURTESY LIGHTS	ILLUMINATED ENTRY SYSTEM
	INSTRUMENT PANEL STORAGE COMPARTMENTS
	ISOFIX REAR CHILD SEAT

Call: 02392 661 304 | [www.northendmotorsportsmouth.co.uk/](http://www.northendmotorsportsmouth.co.uk/)